



165 Marine Parade  
Southport QLD 4215

Call 0410 660 675  
[marinequarter.com.au](http://marinequarter.com.au)



MARINE QUARTER

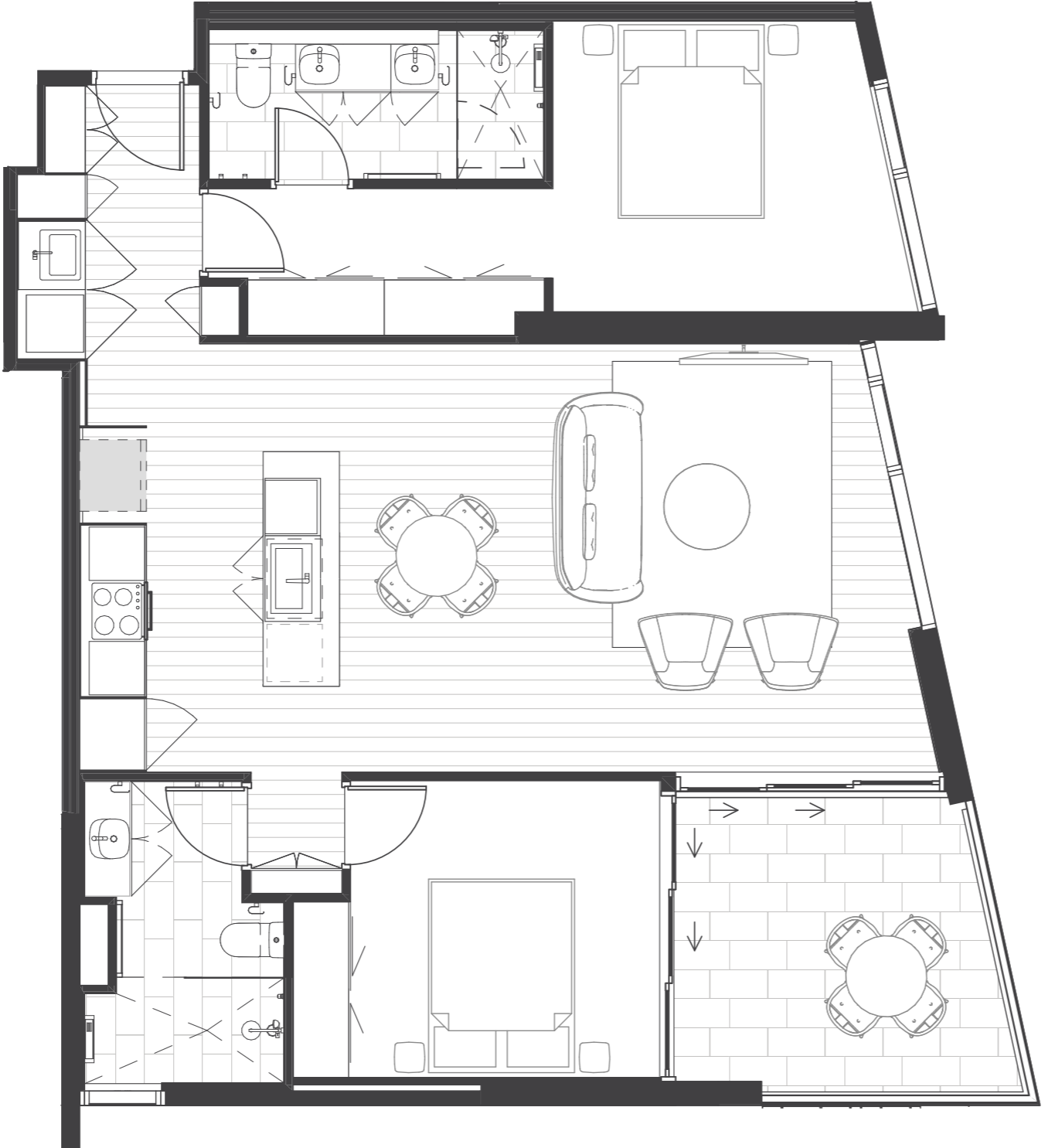
# FLOOR PLAN

Type 4 - Levels 5-26



# TYPE 4

Levels 5-26



m<sup>2</sup>

AREA

INTERNAL  
92.355m<sup>2</sup>

+

BALCONY  
11.305m<sup>2</sup>



BEDROOMS

2



BATHROOMS

2



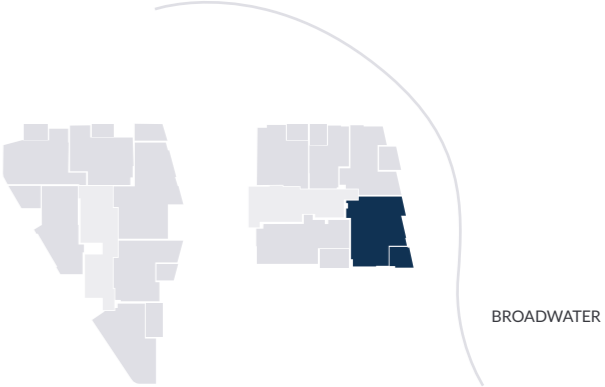
GARAGE

1



BALCONY

1



BROADWATER

NOTE: APARTMENT AREAS ARE TAKEN TO THE CENTRE LINE OF BOUNDING WALLS (AS PER SURVEY PLAN) Whilst every care has been taken in the preparation of this document, it is for guidance only. The developer and its agents make no warranty or representation as to the accuracy, reliability, currency, or completeness of the information herein contained. Interested parties should satisfy themselves as to the accuracy, reliability, currency, or completeness of each description or reference. All information herein is subject to change without notice. Images and views are solely for illustrative purposes and may differ from finished product. Prospective purchasers should obtain their own professional legal and accounting advice before making any commitments. Nothing in this disclaimer is intended to exclude or limit any warranty implied by law that cannot be excluded or limited.